



A European infrastructure dedicated to high precision monitoring of greenhouse gases

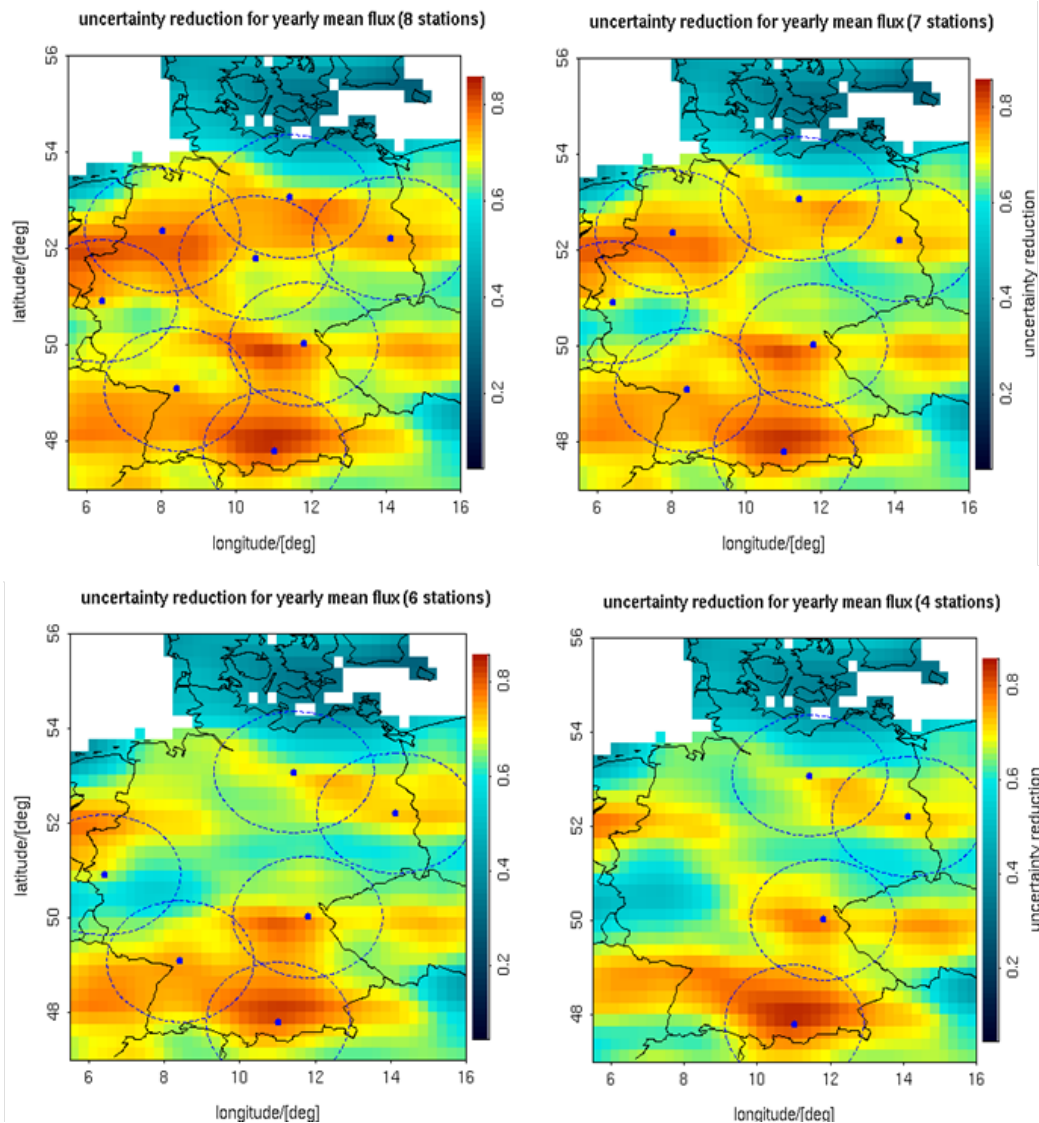


ICOS Atmosphere

Network development status in Germany

Christian Pläß-Dülmer, Marcus Schumacher, Thomas Deromedis, Thomas Koch and
Georg Stange

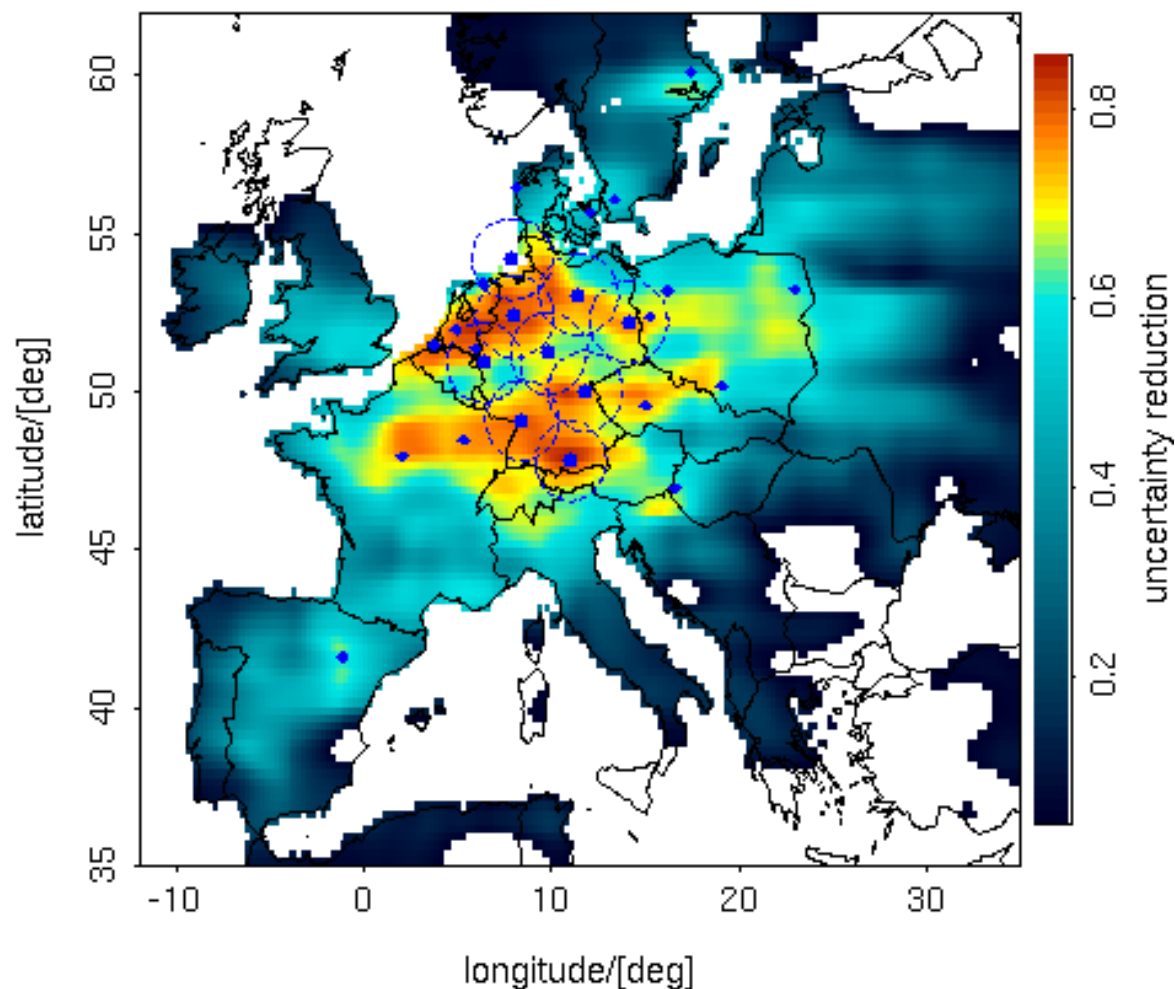
Network Design Study



Objective:
**comprehensive
coverage of the
trace gas fluxes**

***the redder the
better !!!***

uncertainty reduction for yearly mean flux (9 stations)



Completion of the Network

Sites identified by the Network Design Study



light yellow:
to be in operation
end 2015
(secured funding)

yellow & white:
operational in 2017
(funding in
negotiation)

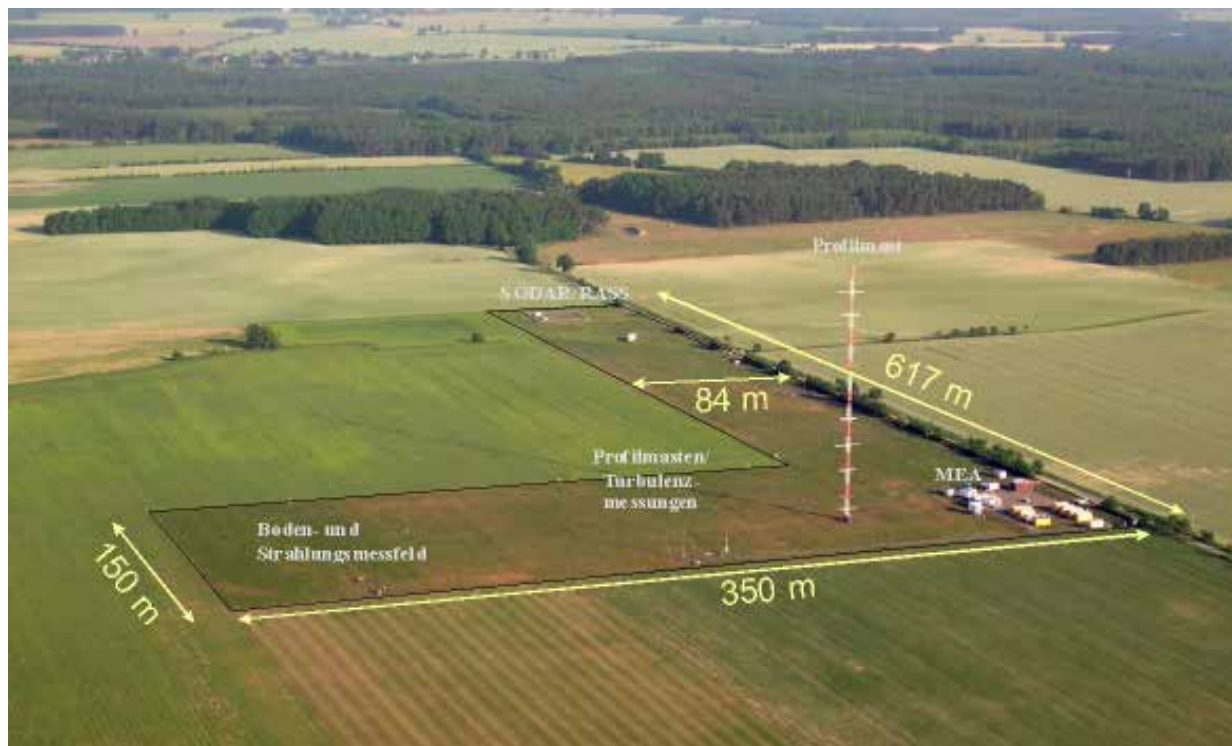
Currently under construction; view from the 93 m level towards MOHp



Projected in 2014

Lindenberg

52°10' N / 14°07' E Elevation NN 73 m
Eastern Germany (south-easterly of Berlin)



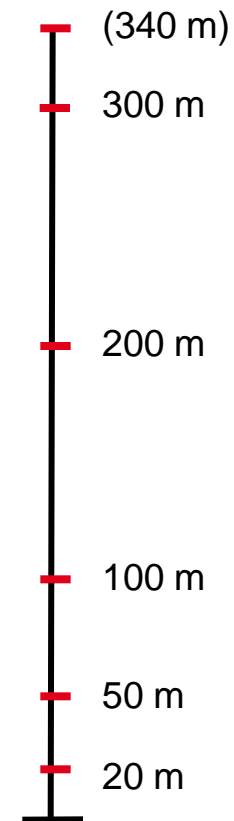
99 m
40 m
10 m
Tower height 99 m

Top level: ≥ 100 m (exception: locations where nocturnal stable boundary layer can frequently, at least 30%, be captured by a shorter tower) **we currently check this condition**

Projected in 2015

Gartow

53°04' N / 11°27' E Elevation NN 79 m
Northern Germany (between Hamburg and Berlin)



Towerheight
344 m

Thanks for your attention!

For questions please contact us:

Christian.Plass-Duelmer@dwd.de and Marcus.Schumacher@dwd.de